



MONTHLY MEMBERSHIP PROGRESS REPORT

District 322C5

Results as of: 08/31/2017

GMT: SWADESH RANJAN SAHA

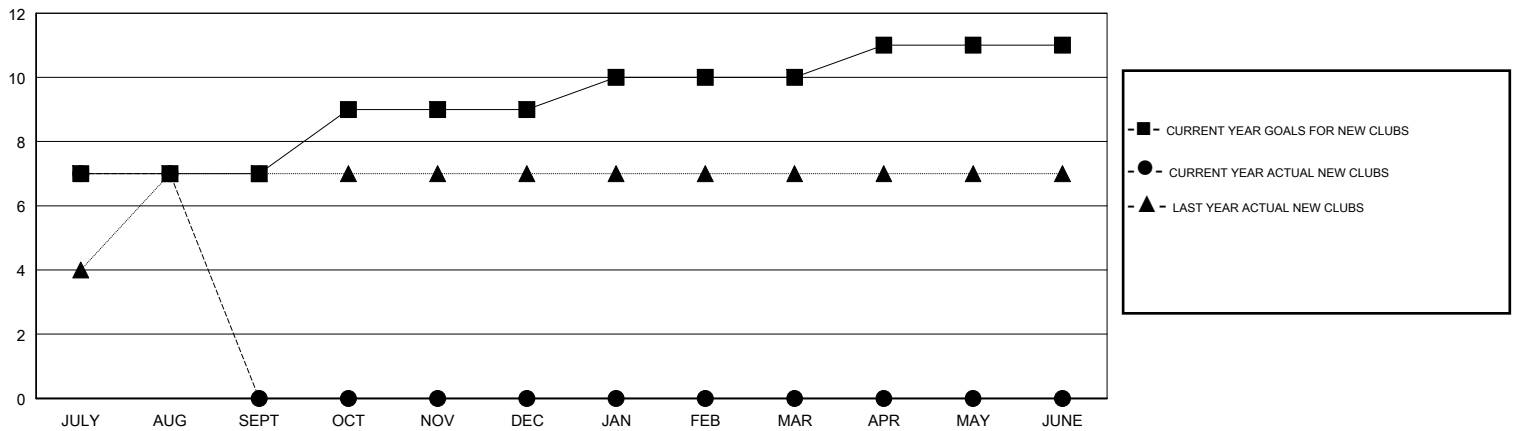
LOCATION INDIA

GMT CA

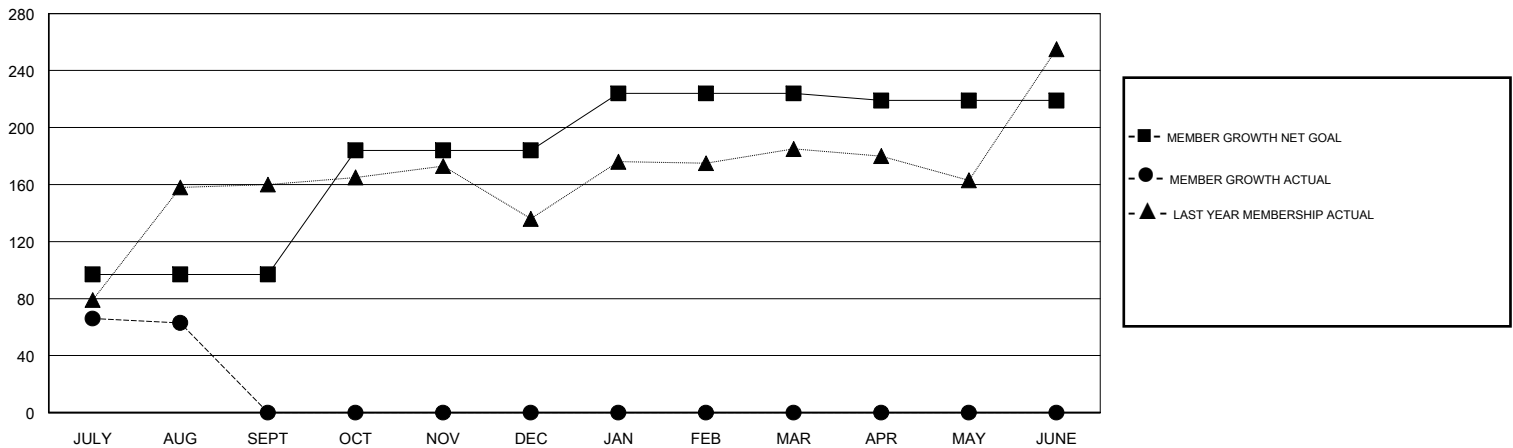
Clubs			
RESULTS FOR 2017-2018			
QUARTER	NEW CLUB GOAL	NEW CLUBS	DROPPED CLUBS
JULY/AUG/SEPT	7	7	0
OCT/NOV/DEC	2	0	0
JAN/FEB/MAR	1	0	0
APR/MAY/JUNE	1	0	0

Members			
RESULTS FOR 2017-2018			
QUARTER	MEMBER GROWTH NET GOAL	MEMBER GROWTH ACTUAL	DROPPED MEMBERS ACTUAL (including transfers)
JULY/AUG/SEPT	97	164	101
OCT/NOV/DEC	87	0	0
JAN/FEB/MAR	40	0	0
APR/MAY/JUNE	-5	0	0

GOALS AND ACTUAL NEW CLUBS CUMULATIVE



GOALS AND ACTUAL MEMBERS CUMULATIVE



DROPPED CLUBS: 0

15 CLUBS OF 58 ADDED 1 OR MORE NEW MEMBERS

GENDER DISTRIBUTION	
MALE	1,125 (63.81%)
FEMALE	638 (36.19%)
Women Percentage Fiscal Year Goal: 36%	

DROPPED MEMBERS	
DECEASED	0
CLUB CANCELLED	0
OTHER	101
TOTAL	101

[CLICK HERE FOR CUMULATIVE MEMBERSHIP DATA](#)

TOTAL FAMILY UNIT MEMBERS	742
FAMILY MEMBERS PAYING HALF DUES	391